

INSTALLATION and MAINTENANCE INSTRUCTIONS SERIES 'A' INDUSTRIAL CABLE REELS

NOTE: This reel is intended for use primarily in hand-pull applications. If mounted overhead, mounting height should not exceed 16'.

INSTALLATION

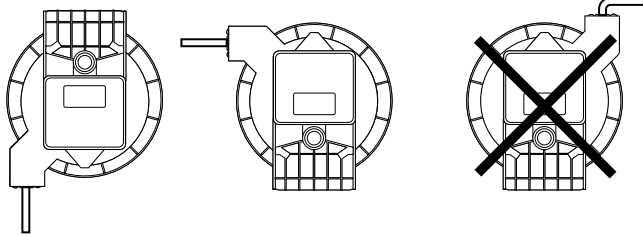
- Securely mount reel in desired position using 5/16" bolts. Be sure spool centerline is aligned with cord run.

CAUTION

If mounting overhead, provide safety chain between reel base and mounting surface to prevent accidental reel drop.

- Determine cord guide position. Guide must be oriented so cord pays off reel **in a straight line** without bends (Fig. 1). If guide position must be changed, remove spring motor clamp (#10 on parts list, pg 2 & 3) at top of vertical frame and loosen the other two clamps holding the roller guide arm from rotating. Rotate arm to desired position and retighten and replace all hardware.

Figure 1 CORD GUIDE POSITIONS



"UP" POSITION
Used primarily when inverted reel is mounted overhead for vertical cord feed or (rotated 90°) mounted low on wall or column for horizontal feed

"SIDE" POSITION
Mount with base up or down for horizontal cord feed, Rotate 90° to mount overhead on wall or column for vertical feed.

DO NOT MOUNT SO CORD MUST MAKE SHARP BEND WHEN EXITING CORD GUIDE.
This can reduce cord life and hinder rewinding of cord onto reel.

- Hard-wire input cord to feed line inside approved junction box.
- Adjust cord stop.

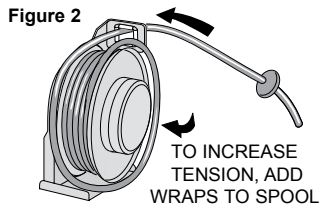
SPRING ADJUSTMENT

Adjust tension by adding wraps (increasing tension) or removing wraps (decreasing tension) from the spool.

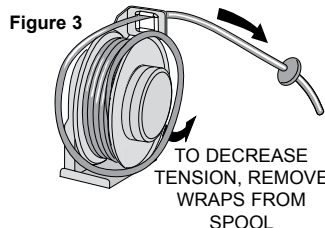
- Pull about 10' of cord, allowing spool to rotate.

INCREASE TENSION: Without allowing spool to rotate, hand feed cord through hose guide until loop is large enough to slip onto spool. **Add** two or three wraps until desired tension is achieved. See Figure 2.

DECREASE TENSION: Without allowing spool to rotate, hand feed cord back through guide to provide slack. **Remove** one or two wraps from spool. See Figure 3.



TO INCREASE TENSION, ADD WRAPS TO SPOOL

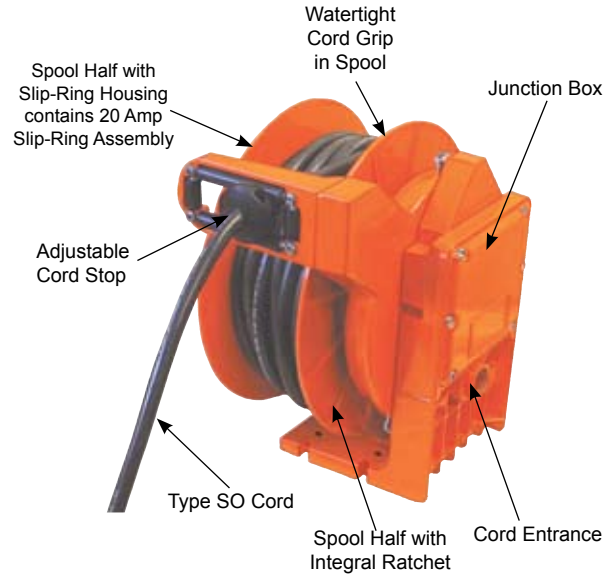


TO DECREASE TENSION, REMOVE WRAPS FROM SPOOL

- Test reel operation.

SPRING REPLACEMENT

If it should be necessary to replace the power spring, work should be performed only by factory authorized service personnel. Failure to do so could result in personal injury and/or equipment damage.



MAINTENANCE

Bearings and springs are prelubricated and require no periodic maintenance.

BRUSH HOLDER or BRUSH REPLACEMENT

Refer to ILLUSTRATED PARTS LIST and ELECTRICAL CONNECTION diagram inside this folder.

- Turn off all electric power.
- Remove slip ring cover.
- Disconnect brush leads from terminal block.
- Remove nuts holding brush holder to reel. Remove brush holder.
- Install new brush holder by reversing above steps.
- Make sure brushes are correctly aligned with slip rings. Adjust brush-to-ring alignment by loosening nuts securing brush holder to reel and repositioning brush holder.

SLIP RING REPLACEMENT

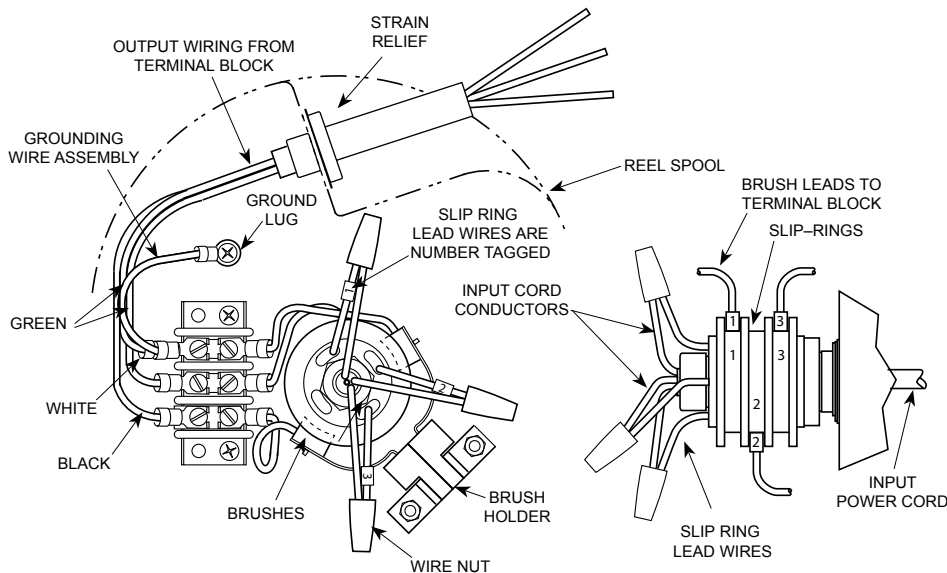
Refer to ILLUSTRATED PARTS LIST and ELECTRICAL CONNECTION diagram inside this folder.

- Turn off all electric power.
- Remove slip ring cover.
- Disconnect input wiring conductors from slip ring lead wires.
- Disconnect brush leads from terminal block.
- Remove nuts holding brush holder to reel and remove brush holder.
- Remove slip ring clamping nut.
- Slide slip ring assembly off shaft.
- Install new slip ring assembly on shaft and re-assemble reel by reversing above steps.
- Make sure brushes are correctly aligned with slip rings. Adjust brush-to-ring alignment by loosening nuts securing brush holder to reel and repositioning brush holder.

INDUSTRIAL CABLE REEL REPLACEMENT PARTS LIST

ITEM No.	PART No.	DESCRIPTION	QTY
1	054719	Vertical Frame (Includes #47)	1
2	055116	Main Shaft	1
3	055118	Screw, Main Shaft Lock Washer	1
4	055117	Main Shaft Holding Nut	1
5	055119	Junction Box Gasket	1
6	054724	Junction Box Cover	1
7	055120	Screw, Junction Box Cover	6
8	055121	O-Ring	1
9	054727	Spring Motor Assembly	1
10	055122	Spring Motor Clamp Bracket	3
11	055123	Screw, Spring Motor Clamp	3
12	055124	Flatwasher	3
13	055125	Nut	3
-	058708	Locking Dog Kit (Includes #14-18,45,46)	1
14	055126	-Locking Dog	1
15	055127	-Shoulder Screw	1
16	055128	-Extension Spring	1
17	055129	-Spring Bracket	1
18	055130	-Screw, Spring Bracket	2
19	054627	Roller Guide Assembly	1
20	054721	Inner Spool Disc	1
21	055132	Cord Grip Spacer (Includes #44)	1
22	055131	Cord Grip	1
23	055133	Slip-Ring Assembly	1
24	055134	Brush Holder Assembly (Includes #42,43)	1
25	055135	Long Brush Assembly	2
26	055136	Terminal Block (Includes #38)	1
27	055137	Ground Wire (Includes #41)	1
28	055138	Slip-Ring Cover Gasket	1
29	054722	Outer Spool Disc	1
30	055139	Screw, Slip-Ring Cover	4
31	05513501	Short Brush Assembly	2
32	055254	Cord Grip	1
33	055255	Shaft Retaining Ring	1
34	Consult Factory	Cord Stop (Includes #39,40)	1
35	055682	Safety Chain Bracket (Includes #37)	1
36	Consult Factory	Cord	1

ELECTRICAL CONNECTIONS



NOTE:

Wire size, wire connectors, connection sequence, and connection methods must comply with National Electrical code and Local Electrical ordinances. If in doubt, contact a local electrical contractor or electrical inspector.

COLOR SEQUENCE FOR TYPE SO CORD

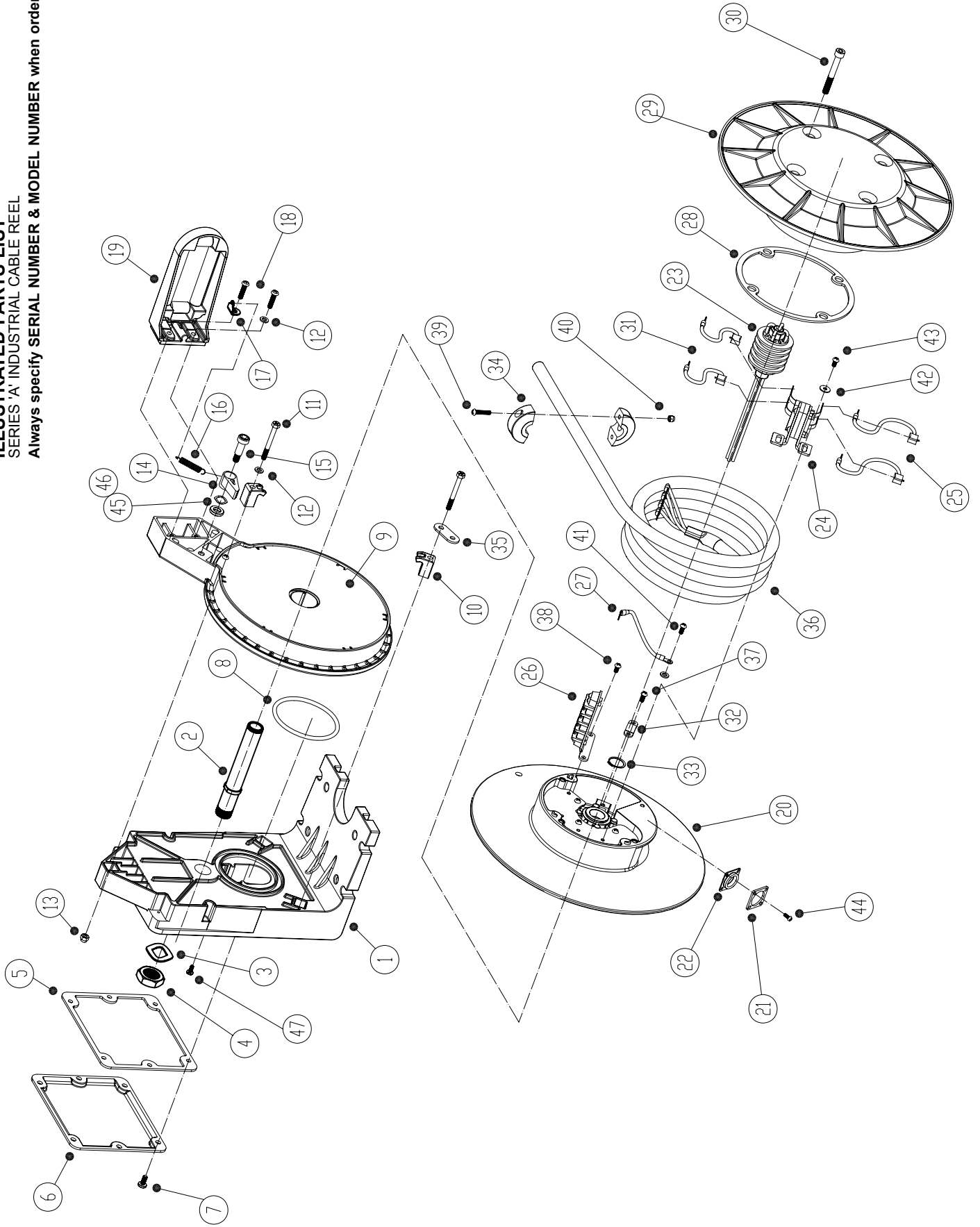
THREE CONDUCTOR CORD
 # 1 – WHITE
 # 2 – GREEN (ground)
 # 3 – BLACK

FOUR CONDUCTOR CORD
 # 1 – RED
 # 2 – WHITE
 # 3 – GREEN (ground)
 # 4 – BLACK

SLIP-RING

- SLIP RING AMPACITY RATED AT 20 AMP MAX PER RING.
- DO NOT EXCEED AMPERAGE RATING OF CORD CONDUCTORS.
- NUMBER OF CIRCUITS MAY BE THREE OR FOUR. THREE CIRCUITS SHOWN.

ILLUSTRATED PARTS LIST
SERIES 'A' INDUSTRIAL CABLE REEL
 Always specify **SERIAL NUMBER & MODEL NUMBER** when ordering parts.



⚠ CAUTION

Failure to relieve all spring tension prior to removing cord could result in damage to equipment or personal injury. Follow instructions carefully.

⚠ WARNING

Do not attempt to remove cord by pulling out through cord guide. Doing so will put excess tension on power spring and could result in personal injury or equipment damage.

OUTPUT CORD REMOVAL

Use the following procedure to remove worn or damaged cord from reel prior to installation of new cord.

1. Turn off all electric power.
2. Disconnect cord from end fixture. Remove cord stop and allow cord to retract onto spool. Ensure all tension is off spring by manually rotating spool.
3. Remove cord from spool by looping over spool flange and slip ring cover.
4. Remove slip ring cover.
5. Disconnect cord leads from terminal block.
6. Loosen locking tab on cord grip inside spool and pull cord out.
7. Install new cord following directions in next column.

OUTPUT CORD INSTALLATION

Use the following procedure to replace cord or if reel was ordered without cord. Refer to ELECTRICAL CONNECTIONS, preceding page.

1. Unspool new cord from shipping spool and lay out to eliminate twist.
2. Remove slip ring cover.
3. Slide cord grip gland and cap onto cord. Feed end of cord through cord grip body and tighten cap until cord is thoroughly secure.
4. Feed end of cord through cord grip body and tighten cap until cord is adequately secured.
5. Strip cord as required and connect individual conductors to appropriate terminal on terminal block.
6. Secure cord inside the slip-ring area with the bar clamp supplied with the reel.
7. Replace slip-ring cover.
8. Wind the cord onto the reel spool by hand rotating spool in direction it turns free of spring tension. (Normally counter-clockwise when viewed from slip ring side).
9. Install end fixture. Install and adjust cord stop.
10. Adjust spring tension as described at SPRING ADJUSTMENT, front page.

DISENGAGE RATCHET LOCK

Use the following procedure to disengage ratchet lock.

1. Remove spring mounting bracket.



2. Using a 10mm allen wrench, place wrench through hole in spool disc, loosen and remove the shoulder bolt and locking dog assembly.



Gleason Reel Corp.
600 South Clark St. • P.O. Box 26
Mayville, WI 53050
Phone: 920-387-4120
Fax: 920-387-4189
www.hubbell-gleason.com