

INSTALLATION and MAINTENANCE INSTRUCTIONS

COMMERCIAL/INDUSTRIAL HOSE REEL

SPRING OPERATED HOSE REEL

This reel is intended for hand pull only and was not designed for continuous duty cycle machine operation.

All units are provided with right hand rotation unless otherwise specified. This means that spool rotates counter-clockwise to wind hose **when viewing reel from swivel side**.

Clock-type springs provide power for hose take-up. Reel was pre-tensioned at factory.

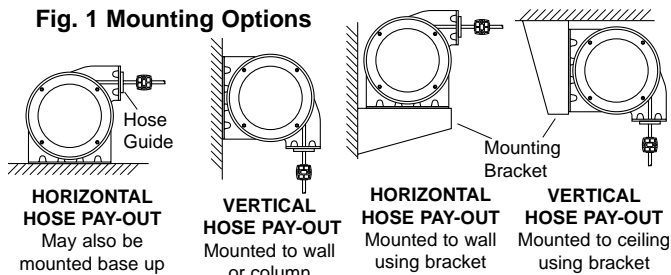
INSTALLATION

1. Securely mount reel in desired position using 3/8"(M10) bolts. Be sure spool centerline is aligned with hose run.

NOTE:

Hose guide must be oriented so hose pays off reel **in a straight line** without bends. For horizontal hose payoff, reel may be mounted with base facing up or down, or with base mounted to wall or other vertical surface using bracket. For vertical hose payoff, reel may be mounted to wall or to ceiling using bracket included with reel (Fig. 1).

Fig. 1 Mounting Options



CAUTION

If mounting overhead, provide safety chain between reel base and mounting surface to prevent accidental reel drop.

2. Pay-out hose to maximum working length. If spool locks up prior to reaching required length, either reel was over-tensioned or reel capacity has been exceeded. Rewind hose and decrease tension one wrap. Refer to SPRING ADJUSTMENT. Retest reel operation.
3. Adjust hose stop.
4. If no-lock operation is desired, disengage ratchet lock. See following section.
5. Turn on pressure to reel.

RATCHET LOCK

Reel is shipped with ratchet lock "engaged". If constant spring tension is required, lock may be disengaged by loosening screw on ratchet lock (item 5 on parts list), sliding the screw to the bottom of the slot and retightening screw.

MAINTENANCE

Bearings and springs are prelubricated and require no periodic maintenance.

SPRING REPLACEMENT

The unique SAFETYCHANGE® spring motor consists of a spring sealed within a housing. A replacement spring is supplied sealed in its housing and the old unit should be discarded completely.

WARNING

Do not attempt to remove spring from its housing. Clock-type springs can be dangerous to handle. Removal of spring from housing could result in personal injury.

Please refer to Illustrated Parts List, back page, for disassembly/assembly order and terminology used in these instructions.

1. Turn off air or water pressure to reel.
2. Remove hose stop.
3. Wind hose onto reel to relieve **all** spring tension.
4. Remove swivel and coupling from main shaft inside spool.
5. Remove retaining ring holding spool on main shaft.
6. Remove entire spool and spring motor assembly.
7. Remove nuts holding spring assembly to spool. Remove spring assembly from spool.
8. Mount new spring assembly on spool. Affix with eight nuts.
9. Reassemble reel by reversing above steps. Be sure flats in spring arbor and main shaft collar are seated on corresponding flat surfaces on main shaft.
10. Adjust spring tension. Refer to SPRING ADJUSTMENT.

SPRING ADJUSTMENT

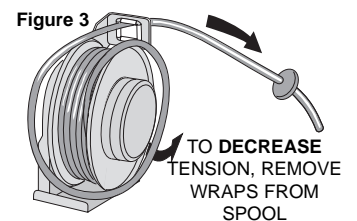
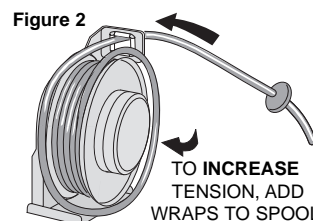
Adjust tension by adding wraps of hose (increasing tension) or removing wraps of hose (decreasing tension) from the spool.

1. Pull about 10' of hose, allowing spool to rotate.

INCREASE TENSION: Without allowing spool to rotate, hand feed hose through hose guide until loop is large enough to slip onto spool. **Add** two or three wraps until desired tension is achieved. See Figure 2.

DECREASE TENSION: Without allowing spool to rotate, hand feed hose back through guide to provide slack. **Remove** one or two wraps from spool. See Figure 3.

2. Test reel operation.

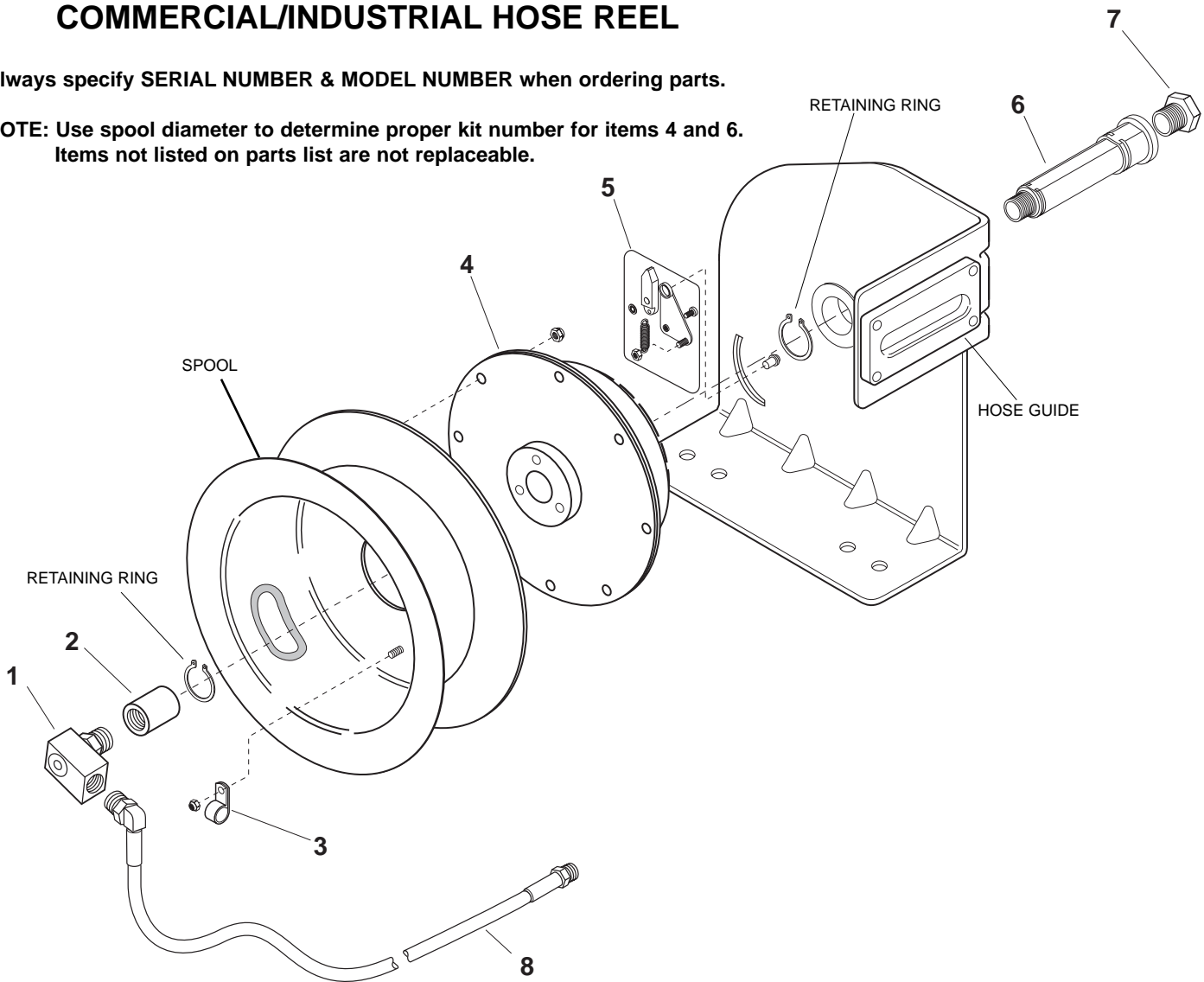


ILLUSTRATED PARTS LIST

COMMERCIAL/INDUSTRIAL HOSE REEL

Always specify SERIAL NUMBER & MODEL NUMBER when ordering parts.

NOTE: Use spool diameter to determine proper kit number for items 4 and 6.
Items not listed on parts list are not replaceable.



PARTS LIST

ITEM	KIT NO.	DESCRIPTION	QTY.
1	02452	3/8"NPT Swivel	1
2	107293	3/8"NPT Coupling	1
3	034592	Hose Clamp—1/4" I.D. Hose	1
3	604127	Hose Clamp—3/8" I.D. Hose	1
4	601027	Spring Motor Assembly (Reels with 9.5" dia. spool)	1
4	602810	Spring Motor Assembly (Reels with 12.0" dia. spool)	1
5	602830	Ratchet Lock Dog Kit (Includes locking dog, disabling lever, extension spring, grip ring)	1
6	601043	Main Shaft (Reels with 9.5" dia. spool)	1
6	604201	Main Shaft (Reels with 12.0" dia. spool)	1
7	024516	3/8-1/4"NPT Bushing	1
8	692034	Hose Assembly—1/4" ID x 15' (For 9.5" dia. spool only)	1
8	69203401	Hose Assembly—1/4" ID x 35' (For 12.0" dia. spool only)	1
8	692036	Hose Assembly—3/8" ID x 10' (For 9.5" dia. spool only)	1
8	69203601	Hose Assembly—3/8" ID x 20' (For 12.0" dia. spool only)	1



Workplace Solutions

P.O. Box 26
600 South Clark St.
Mayville, WI 53050
Phone 920-387-5195